

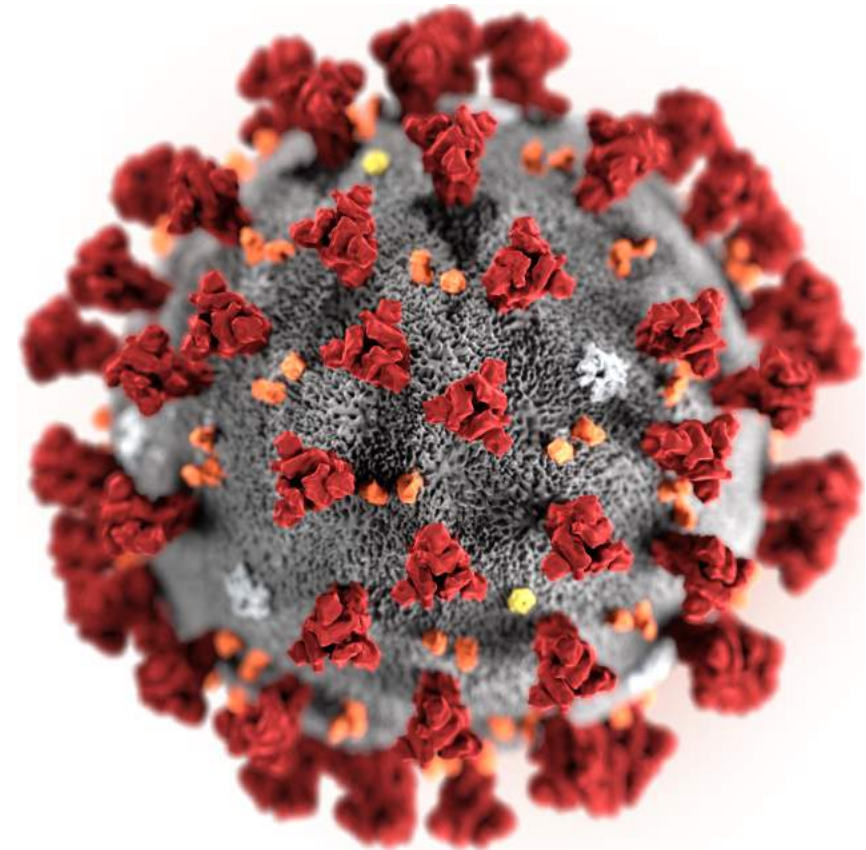
# Infection Prevention and Control (IPC) for Novel Coronavirus (COVID-19)



**Module 2: The novel coronavirus (COVID-19)  
Its epidemiology, risk factors, definitions and symptomology**

# What is a novel coronavirus?

- Coronaviruses (CoV) are a large family of viruses that cause a wide range of illness from the common cold to more severe diseases
  - i.e., Middle East Respiratory Syndrome [MERS] and Severe Acute Respiratory Syndrome [SARS]
- A novel coronavirus (nCoV) is a new strain that has not been previously identified in humans.



# What is a novel coronavirus?

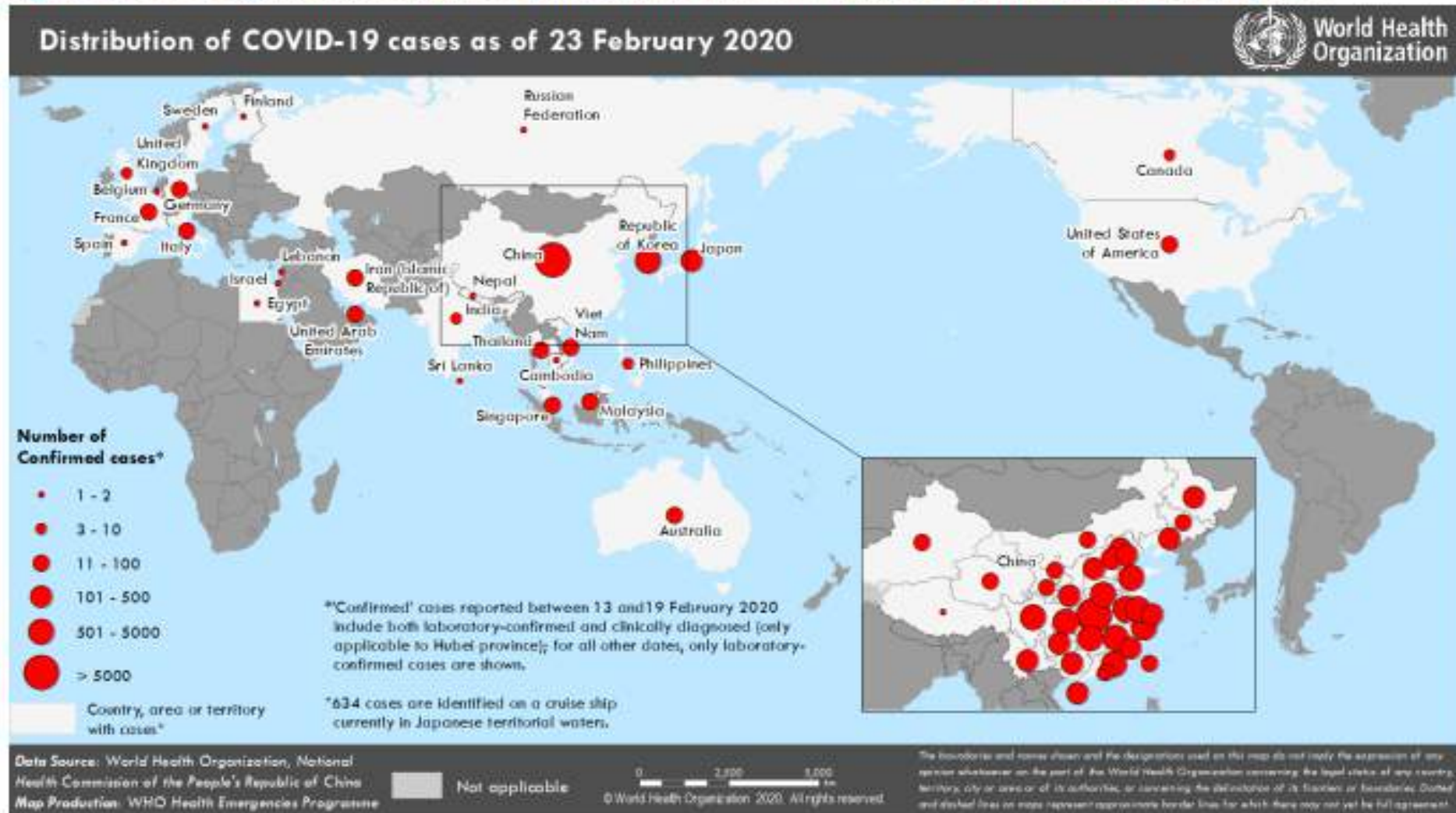


- Coronaviruses (CoV) are a large family of viruses that cause a wide range of illness from the common cold to more severe diseases. They are often zoonotic.
  - I.e., Middle East Respiratory Syndrome [MERS] and Severe Acute Respiratory Syndrome [SARS]
  - Several known coronaviruses are circulating in animals that have not yet infected humans.
- On 31 December 2019, the WHO China Country Office was informed of pneumonia cases of unknown cause in Wuhan City, Hubei Province of China. A novel coronavirus (COVID-19) was isolated and identified as the causative virus by Chinese authorities on 7 January.

# Countries affected

(as of 23-02-2020)

Figure 1. Countries, territories or areas with reported confirmed cases of COVID-19, 23 February 2020



ie situation report includes information provided by national authorities as of 10 AM Central European Time

<https://www.who.int/emergencies/diseases/novel-coronavirus-2019/situation-reports/>

# What we know about COVID-19



- Incubation period - current estimates of the incubation period of the virus range: 1-12.5 days (median 5-6 days).
- Estimates will be refined as more data become available.  
More information needed to determine whether transmission can occur from asymptomatic individuals or during the incubation period.
- Modes of transmission: droplets sprayed by affected individuals, contact with patient respiratory secretions, contaminated surfaces and equipment.
- Transmission from animals and human-to-human.
- Currently no available treatment or vaccination, supportive measures only.

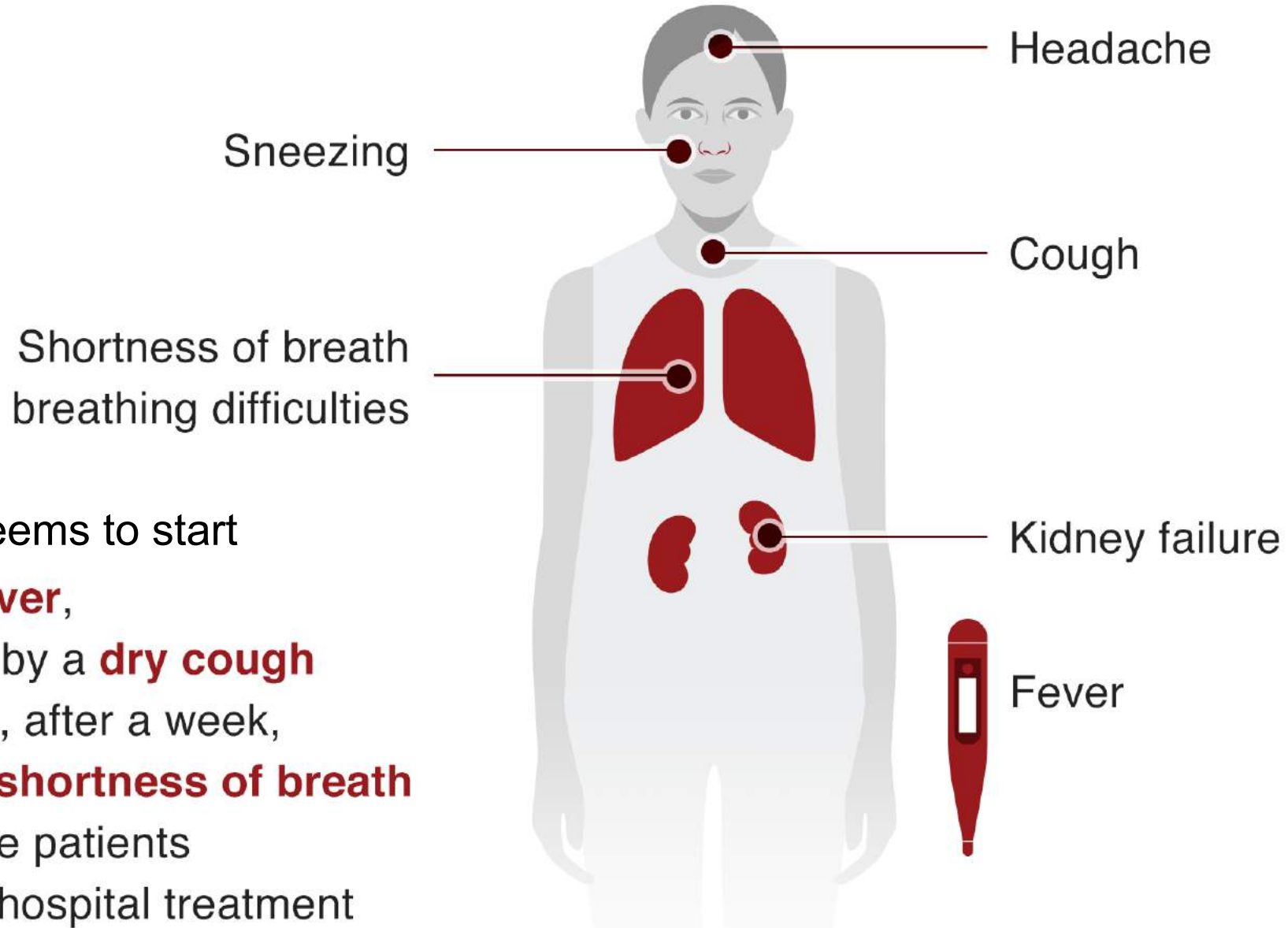


# What we know about COVID-19



- Modes of transmission: droplets sprayed by affected individuals, contact with patient respiratory secretions, contaminated surfaces and equipment.
- Transmission from animals and human-to-human.
- Currently no available treatment or vaccination, supportive measures only.

# COVID-19 signs and symptoms



Illness seems to start with a **fever**, followed by a **dry cough** and then, after a week, leads to **shortness of breath** and some patients needing hospital treatment

# Symptoms of COVID-19

## Early Stage:

Fever (>38C)

AND

Respiratory symptoms:

- Cough
- Shortness of breath
- Runny nose
- Weakness
- Malaise
- Nausea/vomiting
- Diarrhea
- Headache

## Advanced Stage:

All of the earlier  
symptoms plus

- Pneumonia
- Bronchitis



# Case definitions – (as of 04-02-2020) to be investigated and tested



## **Severe acute respiratory infection (SARI):**

**A.** History of fever, cough, and requiring admission to hospital,  
(with no other etiology that fully explains the clinical presentation)

**AND**

history of travel or residence in/to China in the 14 days  
prior to symptom onset

**OR**

**B.** Patient with any acute respiratory illness AND at least one of the  
following during the 14 days prior to symptom onset:

Contact with a confirmed or suspected case of COVID-19 infection

**OR**

worked in or attended a health care facility where patients with  
confirmed or probable COVID-19 acute respiratory disease  
patients were being treated